

base block, stack valve, CETOP 3 (with pressure regulator valve PRV.)

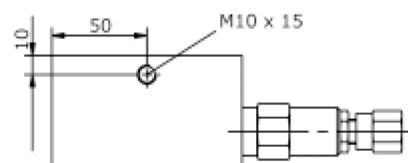
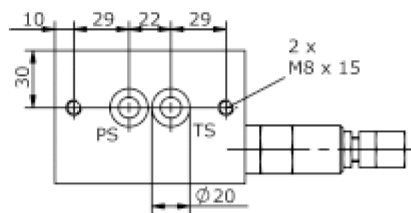
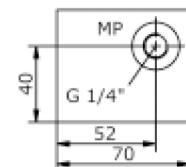
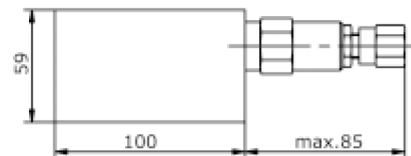
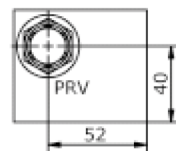
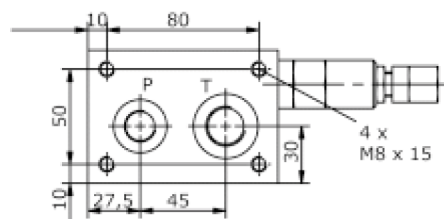
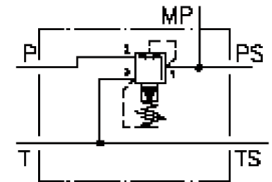
MBS-06A-B50/B.-.../..



Motrac Hydraulik GmbH
Siemensring 87 - D-47877 Willich
fon +49-(0)2154-8162.0 - fax +49-(0)2154-8162.499
e-mail info.mhw@motrac-hydraulics.com
internet www.motrac-hydraulics.com

IM-418-101-00

(subject to change)



base block, stack valve, CETOP 3 (with pressure regulator valve PRV.)

MBS-06A-B50/B.-.../..



IM-418-101-00

(subject to change)

Ordering example:

MBS - 06A - B50 / B03 - 01 - C / 12

A **B** **C** **D** **E** **F** **G**

Model code:

- | | |
|--|--|
| A design
IMAV-stack system | G pressure range
PRV1-10.-..
02 = 3.5 - 14 bar
06 = 7.0 - 40 bar
12 = 14.0 - 85 bar
36 = 30.0 - 165 bar |
| B size and material
06A = aluminum (F37) | PRV2-10.-..
03 = 3.5 - 20 bar
20 = 7.0 - 140 bar
35 = 17.0 - 240 bar |
| C base manifold
base block | |
| D port size P and T
B03 = P: BSPP 3/8" and T: BSPP 1/2" | |
| E pressure reducing valve
01 = PRV1-10.-.. (direct acting) see data sheet no.: MP-210-100-00
02 = PRV2-10.-.. (pilot operated) see data sheet no.: MP-210-101-00 | |
| F adjustment
C = cap
K = handknob | |

Technical Data:

nominal pressure: 210 bar
weight: 1.3 kg
included: included
2 pcs. O-Ring 15.10 x 2.70