

base block, stack valve, CETOP 3 (with relief valve and 2 way release valve)

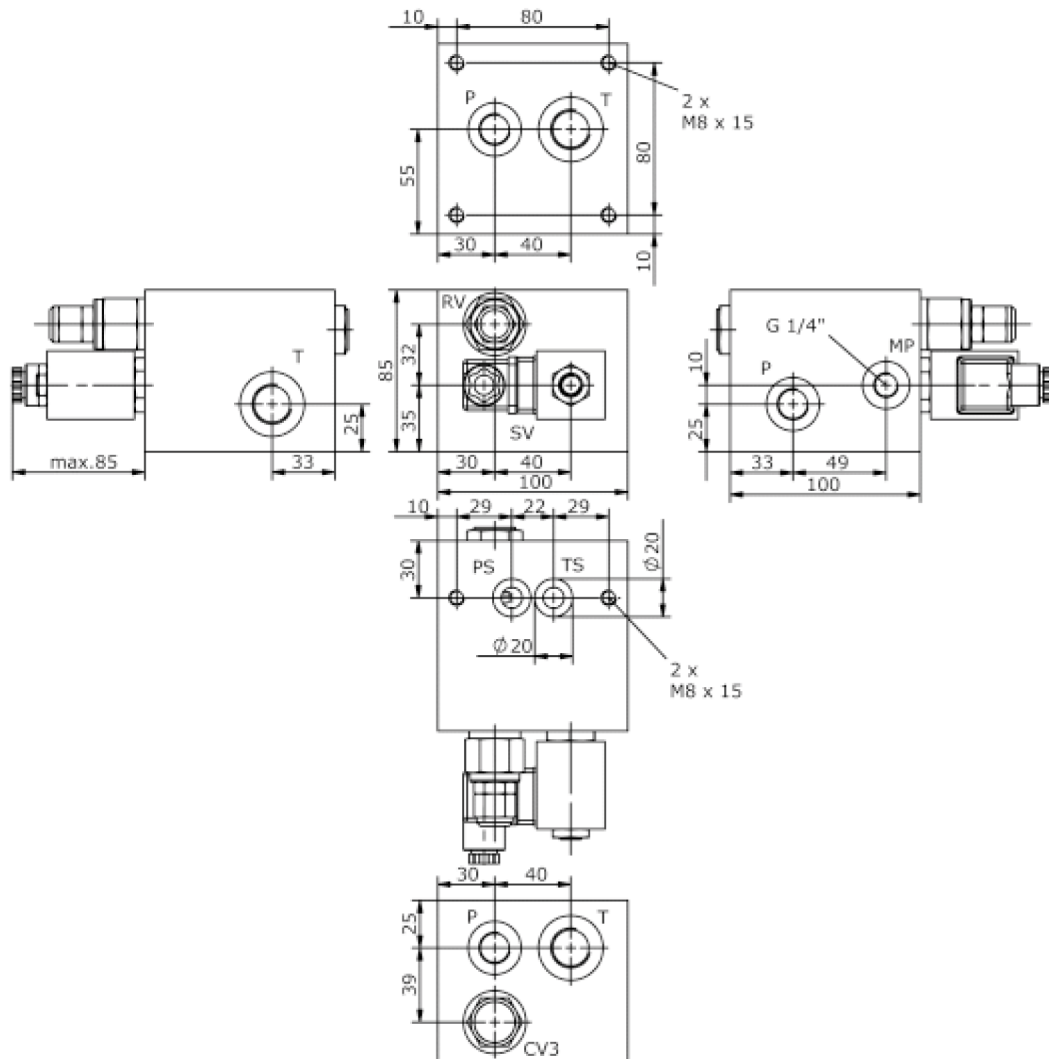
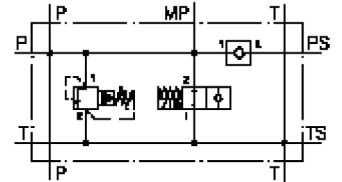
MBS-06.-B30/B...-.../...-.....



Motrac Hydraulik GmbH
Siemensring 87 - D-47877 Willich
fon +49-(0)2154-8162.0 - fax +49-(0)2154-8162.499
e-mail info.mhw@motrac-hydraulics.com
internet www.motrac-hydraulics.com

IM-412-103-00

(subject to change)



base block, stack valve, CETOP 3 (with relief valve and 2 way release valve)

MBS-06.-B30/B.-.../..-.....



Motrac Hydraulik GmbH
Siemensring 87 - D-47877 Willich
fon +49-(0)2154-8162.0 - fax +49-(0)2154-8162.499
e-mail info.mhw@motrac-hydraulics.com
internet www.motrac-hydraulics.com

IM-412-103-00

(subject to change)

Ordering example:

MBS - 06A - B30 / B03 - 05 - C / 20 - C - 024D - G

A **B** **C** **D** **E** **F** **G** **H** **I** **J**

Model code:

- | | |
|---|--|
| <p>A design
IMAV-stack system</p> <p>B size and material
06A = aluminum (F37)
06S = steel (9SMnPb28K resp. GGG-40)</p> <p>C base manifold
base block</p> <p>D port size P and T
B03 = P: BSPP 3/8" and T: BSPP 1/2"
B04 = P: BSPP 1/2" and T: BSPP 3/4"</p> <p>E relief valve
05 = RV5-10.-.. (direct acting) see data sheet no.: <u>MP-170-101-00</u>
PS = RVPS-10.-.. (pilot operated) see data sheet no.: <u>CP-110-101-00</u></p> <p>F adjustment
J = internal (only RV5)
C = cap
S = screw adjustment</p> <p>G pressure range
RV5-10.-..
03 = 3.5 - 20 bar
20 = 7.0 - 140 bar
35 = 17.0 - 240 bar
RVPS-10.-..
15 = 3.4 - 105 bar
30 = 3.4 - 210 bar
50 = 3.4 - 350 bar</p> | <p>H type: SV3-10.-..
C = normally closed
SV3-10.-C-.. see data sheet no.: <u>MS-240-100-00</u>
0 = normally open
SV3-10.-0-.. see data sheet no.: <u>MS-430-100-00</u></p> <p>I voltage
DC current:
012D = 12V DC
024D = 24V DC
AC current:
120A = 120V AC
240A = 240V AC
other voltage on request</p> <p>J power supply
G = DIN 43650 connector, other connectors see data sheet no.: <u>MS-010-000-00</u></p> |
|---|--|

Technical Data:

nominal pressure:	210 bar (A) 350 bar (S)
weight:	2.5 / 5.3 kg (A/S)
check valve:	CV3-10.-.. see datasheet no. <u>MC-130-100-00</u>
included:	included 2 pcs. O-Ring 15.10 x 2.70