

# base block, stack valve, CETOP 3 (with relief valve type RV.+1, CETOP 3)

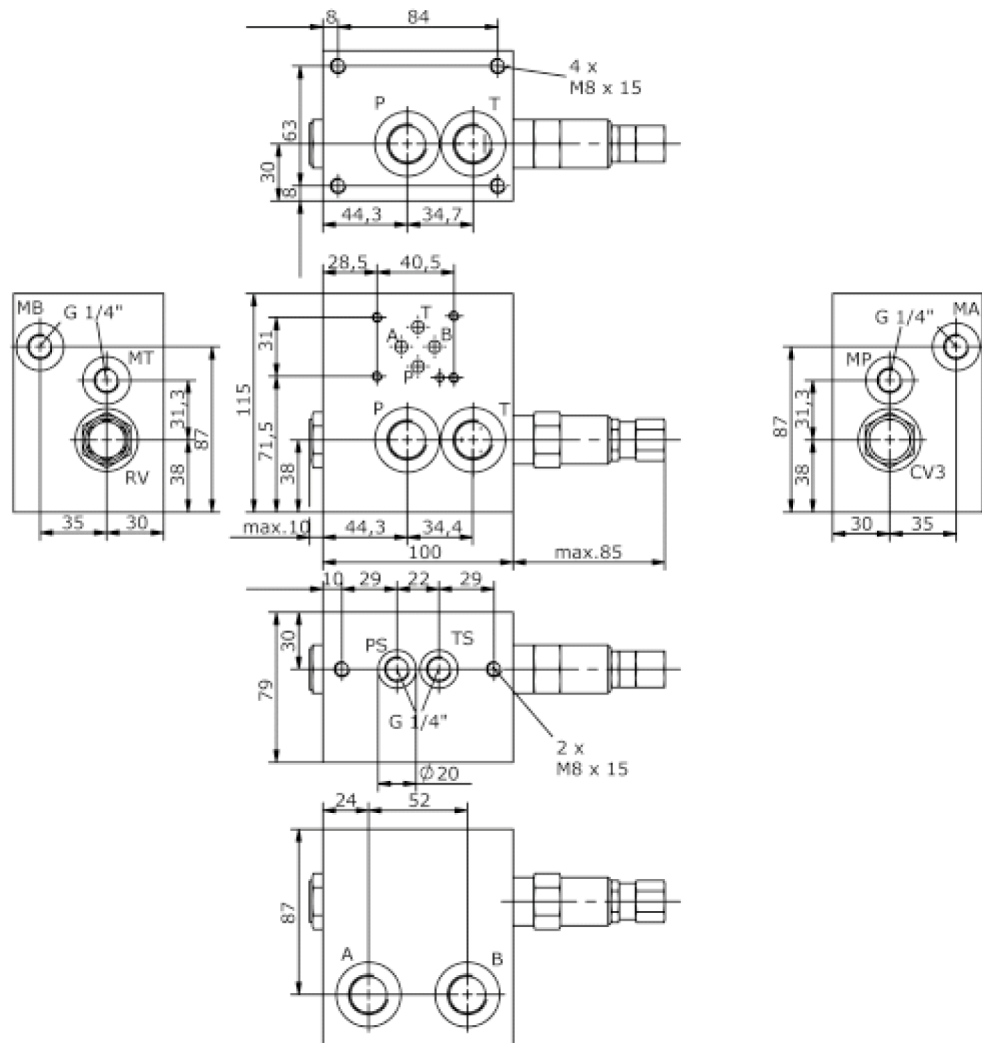
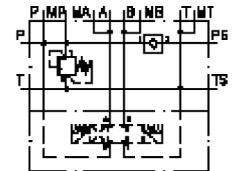
MBS-06A-B13/B.-.../..



Motrac Hydraulik GmbH  
Siemensring 87 - D-47877 Willich  
fon +49-(0)2154-8162.0 - fax +49-(0)2154-8162.499  
e-mail info.mhw@motrac-hydraulics.com  
internet www.motrac-hydraulics.com

IM-410-251-00

(subject to change)



# base block, stack valve, CETOP 3 (with relief valve type RV.+1, CETOP 3)

MBS-06A-B13/B.-.../..



Motrac Hydraulik GmbH  
Siemensring 87 - D-47877 Willich  
fon +49-(0)2154-8162.0 - fax +49-(0)2154-8162.499  
e-mail info.mhw@motrac-hydraulics.com  
internet www.motrac-hydraulics.com

IM-410-251-00

(subject to change)

## Ordering example:

MBS - 06A - B13 / B04 - 01 - C / 18  
|        |        |        |        |        |        |  
**A**    **B**    **C**    **D**    **E**    **F**    **G**

## Model code:

- |  |   |
|--|---|
| <b>A</b> <b>design</b><br>IMAV-stack system  | <b>G</b> <b>pressure range</b><br>RV1-10-..<br>03 = 3.5 - 20 bar<br>09 = 7.0 - 62 bar<br>18 = 17.0 - 124 bar<br>36 = 34.0 - 250 bar |
| <b>B</b> <b>size and material</b><br>06A = aluminum (F37)  | RV5-10-..<br>03 = 3.5 - 20 bar<br>20 = 7.0 - 140 bar<br>35 = 17.0 - 240 bar   |
| <b>C</b> <b>base manifold</b><br>base block  |   |
| <b>D</b> <b>port size P, T, A and B</b><br>B04 = BSPP 1/2"   |   |
| <b>E</b> <b>relief valve</b><br>01 = RV1-10-... (direct acting) see data sheet no.: <u>MP-100-100-00</u><br>05 = RV5-10-... (direct acting) see data sheet no.: <u>MP-170-101-00</u> |   |
| <b>F</b> <b>adjustment</b><br>J = internal<br>C = cap<br>K = handknob  |   |

## Technical Data:

**nominal pressure:** 210 bar  
**weight:** 2.6 kg  
**check valve:** CV3-10-... see datasheet no. MC-130-100-00  
**included:** included  
2 pcs. O-Ring 15.10 x 2.70