

base block, stack valve, CETOP 3 (with relief valve type PS. w. CETOP 3-in)

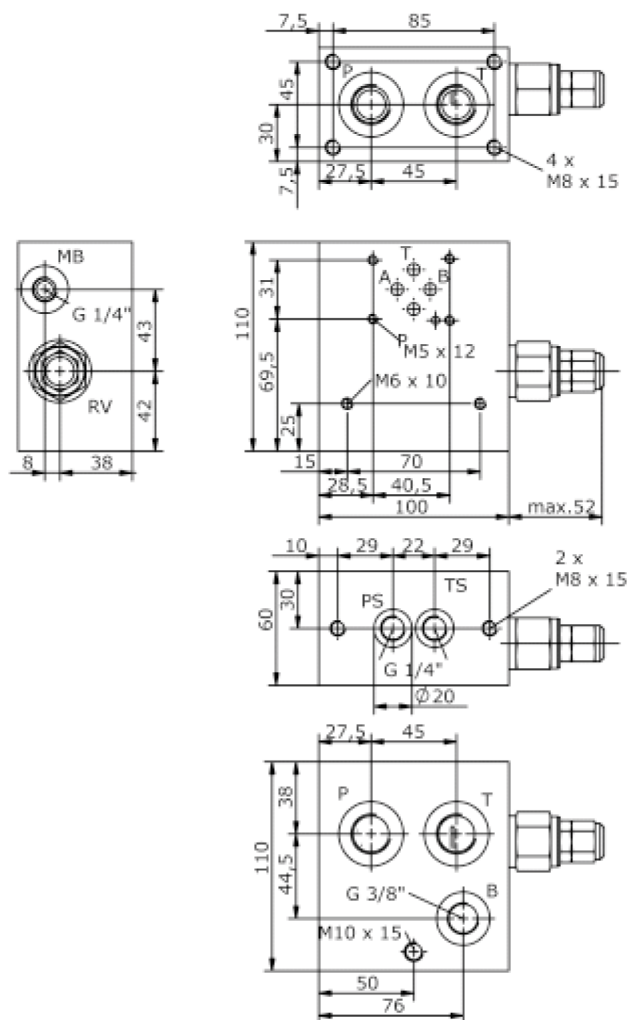
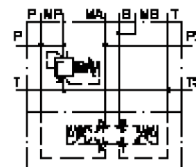
MBS-06.-B12/B.-PS./..



Motrac Hydraulik GmbH
Siemensring 87 - D-47877 Willich
fon +49-(0)2154-8162.0 - fax +49-(0)2154-8162.499
e-mail info.mhw@motrac-hydraulics.com
internet www.motrac-hydraulics.com

IM-410-202-00

(subject to change)



base block, stack valve, CETOP 3 (with relief valve type PS. w. CETOP 3-in)

MBS-06.-B12/B.-PS./..



Motrac Hydraulik GmbH
Siemensring 87 - D-47877 Willich
fon +49-(0)2154-8162.0 - fax +49-(0)2154-8162.499
e-mail info.mhw@motrac-hydraulics.com
internet www.motrac-hydraulics.com

IM-410-202-00

(subject to change)

Ordering example:

MBS - 06A - B12 / B04 - PS - C / 30
| | | | | | |
A **B** **C** **D** **E** **F** **G**

Model code:

- | | |
|--|---|
| A design
IMAV-stack system | G pressure range
RVPS-10.-..
15 = 3.4 - 105 bar
30 = 3.4 - 210 bar
50 = 3.4 - 350 bar |
| B size and material
06A = aluminum (F37)
06S = steel (9SMnPb28K resp. GGG-40) | |
| C base manifold
base block | |
| D port size P and T
B04 = BSPP 1/2" | |
| E relief valve
PS = RVPS-10.-.. (pilot operated) see data
sheet no.: CP-110-101-00 | |
| F adjustment
C = cap
K = handknob
S = screw adjustment | |

Technical Data:

nominal pressure: 210 bar (A)
350 bar (S)

weight: 1.9 / 4.1 kg (A/S)

included: included
2 pcs. O-Ring 15.10 x 2.70