

base block, stack valve, CETOP 3 (with relief valve type RV. with CETOP 3-in)

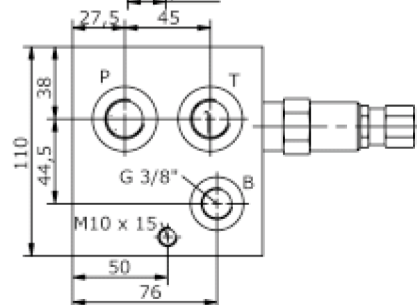
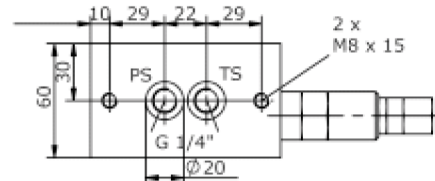
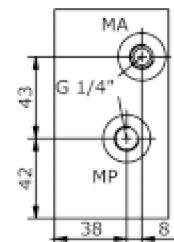
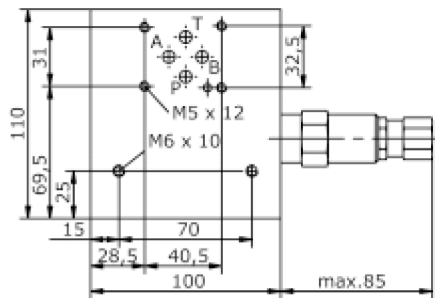
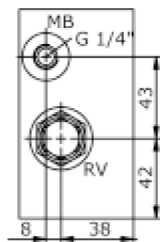
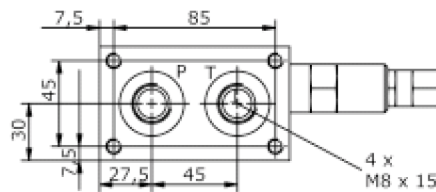
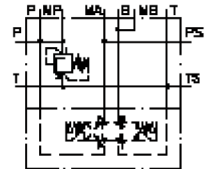
MBS-06A-B12/B..-.../..



Motrac Hydraulik GmbH
Siemensring 87 - D-47877 Willich
fon +49-(0)2154-8162.0 - fax +49-(0)2154-8162.499
e-mail info.mhw@motrac-hydraulics.com
internet www.motrac-hydraulics.com

IM-410-201-00

(subject to change)



base block, stack valve, CETOP 3 (with relief valve type RV. with CETOP 3-in)

MBS-06A-B12/B.-.../..



Motrac Hydraulik GmbH
Siemensring 87 - D-47877 Willich
fon +49-(0)2154-8162.0 - fax +49-(0)2154-8162.499
e-mail info.mhw@motrac-hydraulics.com
internet www.motrac-hydraulics.com

IM-410-201-00

(subject to change)

Ordering example:

MBS - 06A - B12 / B04 - 01 - C / 18
| | | | | | |
A **B** **C** **D** **E** **F** **G**

Model code:

- | | |
|--|--|
| A design
IMAV-stack system | G pressure range
RV1-10.-..
03 = 3.5 - 20 bar
09 = 7.0 - 62 bar
18 = 17.0 - 124 bar
36 = 34.0 - 250 bar |
| B size and material
06A = aluminum (F37) | RV5-10.-..
03 = 3.5 - 20 bar
20 = 7.0 - 140 bar
35 = 17.0 - 240 bar |
| C base manifold
base block | |
| D port size P and T
B04 = BSPP 1/2" | |
| E relief valve
01 = RV1-10.-.. (direct acting) see data sheet no.: <u>MP-100-100-00</u>
05 = RV5-10.-.. (direct acting) see data sheet no.: <u>MP-170-101-00</u> | |
| F adjustment
J = internal
C = cap
K = handknob | |

Technical Data:

nominal pressure: 210 bar
weight: 1.9 kg
included: included
2 pcs. O-Ring 15.10 x 2.70