

base block, stack valve, CETOP 3 (with relief valve type PS.+ CETOP 5)

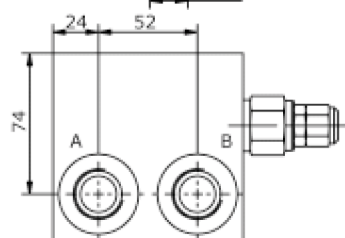
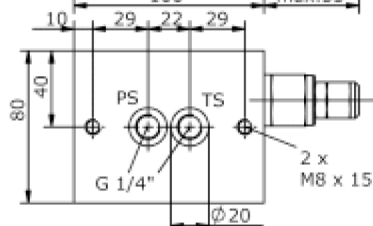
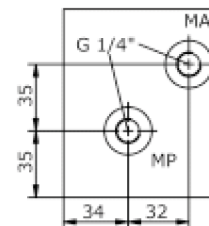
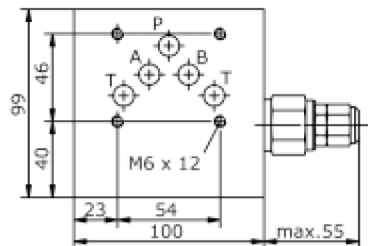
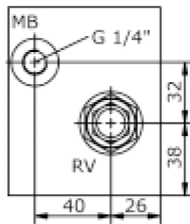
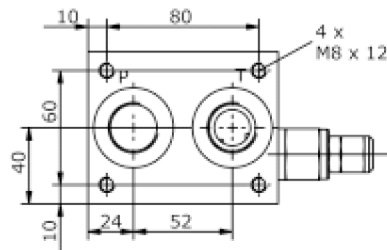
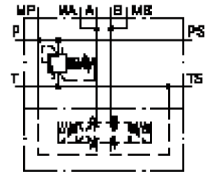
MBS-06.-B11/B..-PS./..



Motrac Hydraulik GmbH
Siemensring 87 - D-47877 Willich
fon +49-(0)2154-8162.0 - fax +49-(0)2154-8162.499
e-mail info.mhw@motrac-hydraulics.com
internet www.motrac-hydraulics.com

IM-410-152-00

(subject to change)



base block, stack valve, CETOP 3 (with relief valve type PS.+ CETOP 5)

MBS-06.-B11/B.-PS./..



Motrac Hydraulik GmbH
Siemensring 87 - D-47877 Willich
fon +49-(0)2154-8162.0 - fax +49-(0)2154-8162.499
e-mail info.mhw@motrac-hydraulics.com
internet www.motrac-hydraulics.com

IM-410-152-00

(subject to change)

Ordering example:

MBS - 06A - B11 / B06 - PS - C / 30

A	B	C	D	E	F	G

Model code:

- | | |
|---|--|
| <p>A design
IMAV-stack system</p> <p>B size and material
06A = aluminum (F37)
06S = steel (9SMnPb28K resp. GGG-40)</p> <p>C base manifold
base block</p> <p>D port size P, T, A and B
B06 = BSPP 3/4"</p> <p>E relief valve
PS = RVPS-10.-.. (pilot operated) see data sheet no.: CP-110-101-00</p> <p>F adjustment
C = cap
K = handknob
S = screw adjustment</p> | <p>G pressure range
RVPS-10.-..</p> <p>15 = 3.4 - 105 bar
30 = 3.4 - 210 bar
50 = 3.4 - 350 bar</p> |
|---|--|

Technical Data:

nominal pressure: 210 bar (A)
350 bar (S)

weight: 2.3 / 4.9 kg (A/S)

included: included
2 pcs. O-Ring 15.10 x 2.70