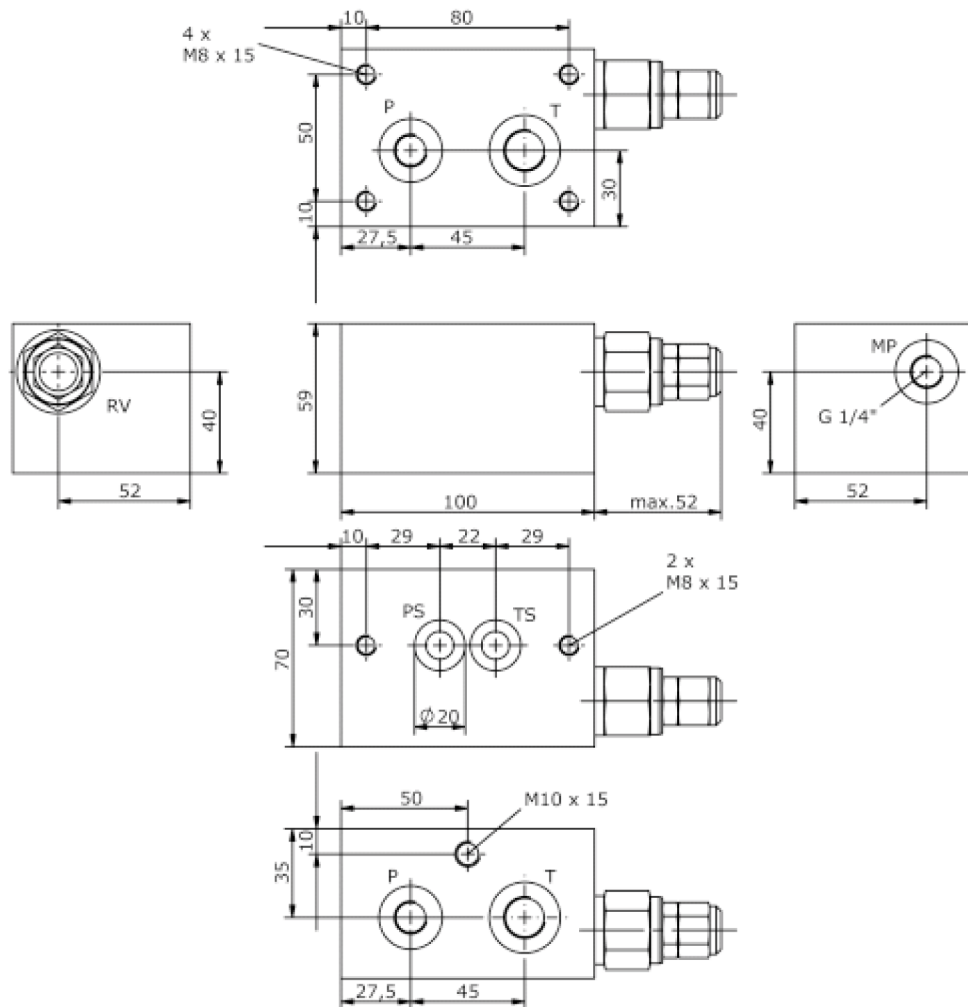
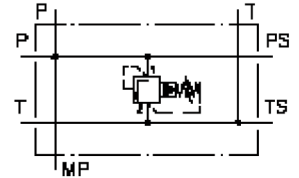


# base block, stack valve, CETOP 3 (with relief valve type PS.)

MBS-06.-B10/B..-PS./..

IM-410-102-00

(subject to change)



# base block, stack valve, CETOP 3 (with relief valve type PS.)

MBS-06.-B10/B.-PS./..



**IM-410-102-00**

(subject to change)

## Ordering example:

MBS - 06A - B10 / B03 - PS - C / 30

A	B	C	D	E	F	G

## Model code:

- |  |  |
|--|--|
| <p><b>A design</b><br/>IMAV-stack system</p> <p><b>B size and material</b><br/>06A = aluminum (F37)<br/>06S = steel (9SMnPb28K resp. GGG-40)</p> <p><b>C base manifold</b><br/>base block</p> <p><b>D port size P and T</b><br/>B02 = P: BSPP 1/4" and T: BSPP 3/8"<br/>B03 = P: BSPP 3/8" and T: BSPP 1/2"<br/>B04 = P: BSPP 1/2" and T: BSPP 3/4"</p> <p><b>E relief valve</b><br/>PS = RVPS-10.-.. (pilot operated) see data sheet no.: <a href="#">CP-110-101-00</a></p> | <p><b>F adjustment</b><br/>C = cap<br/>K = handknob<br/>S = screw adjustment</p> <p><b>G pressure range</b><br/>RVPS-10.-..<br/>15 = 3.4 - 105 bar<br/>30 = 3.4 - 210 bar<br/>50 = 3.4 - 350 bar</p> |
|--|--|

## Technical Data:

- |                          |  |
|--------------------------|--|
| <b>nominal pressure:</b> | 210 bar (A)<br>350 bar (S)             |
| <b>weight:</b>           | 1.3 / 2.8 kg (A/S)                     |
| <b>included:</b>         | included<br>2 pcs. O-Ring 15.10 x 2.70 |