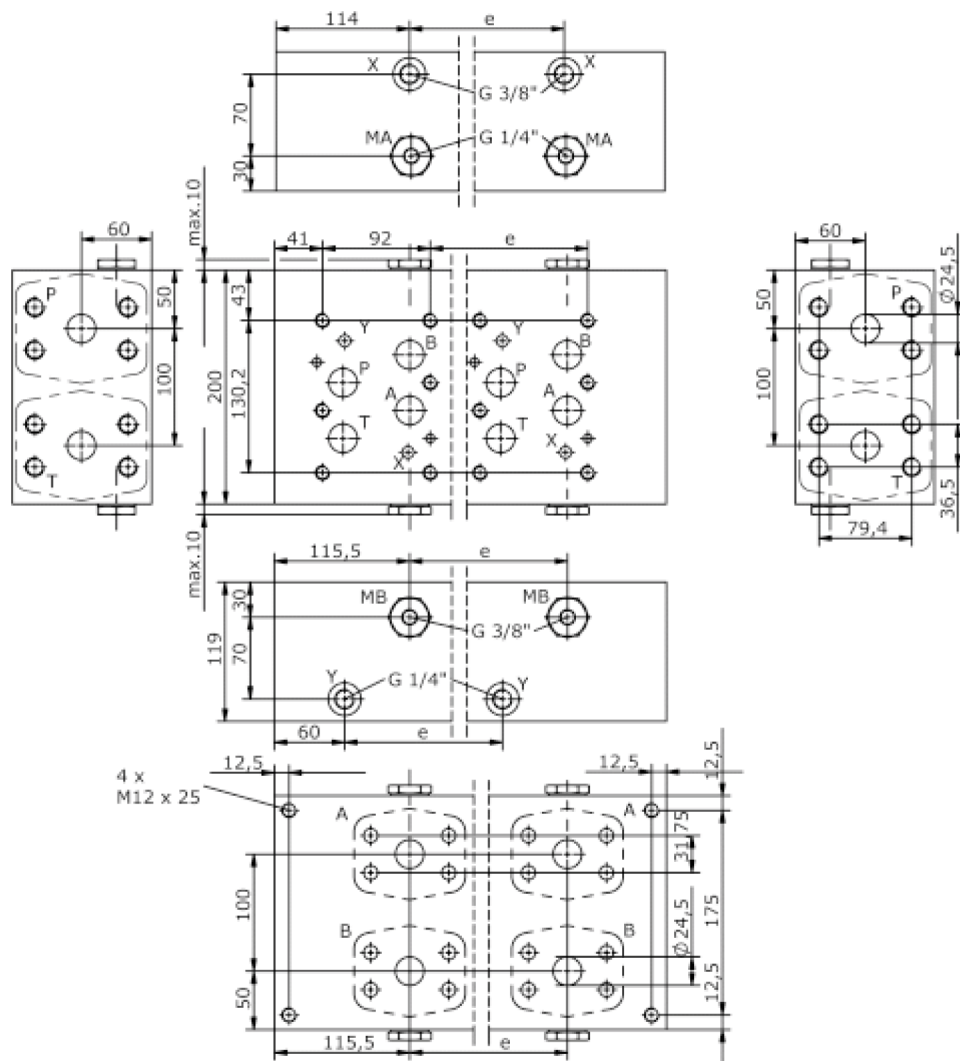
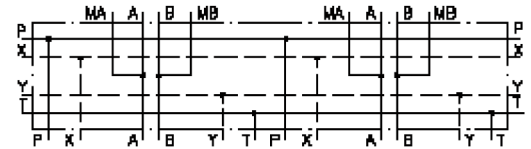


single mounting plate, CETOP 8 (with SAE-ports SAE 1 1/2")

MSP-25A-.-S-U-SAE 1 1/2"-XY

IM-290-140-00

(subject to change)



single mounting plate, CETOP 8 (with SAE-ports SAE 1 1/2")

MSP-25A-.-S-U-SAE 1 1/2"-XY



Motrac Hydraulik GmbH
Siemensring 87 - D-47877 Willich
fon +49-(0)2154-8162.0 - fax +49-(0)2154-8162.499
e-mail info.miw@motracindustries.com
internet www.motracindustries.com

IM-290-140-00

(subject to change)

Ordering example:

MSP - 25A - 3 - S - U - SAE1 1/2" - XY

A **B** **C** **D** **E** **F** **G**

Model code:

- | | |
|--|--|
| A design
multi station mounting subplate | E port A and B at the bottom
port A and B at the bottom |
| B size and material
25A = aluminum (F37) | F port A and B
SAE 1 1/2" 6000 PSI |
| C qty. of directional valves
number of directional valves | G X and Y port
port X and Y |
| D port P and T at the side
port P and T at the side | |

Technical Data:

nominal pressure: 250 bar

weight: