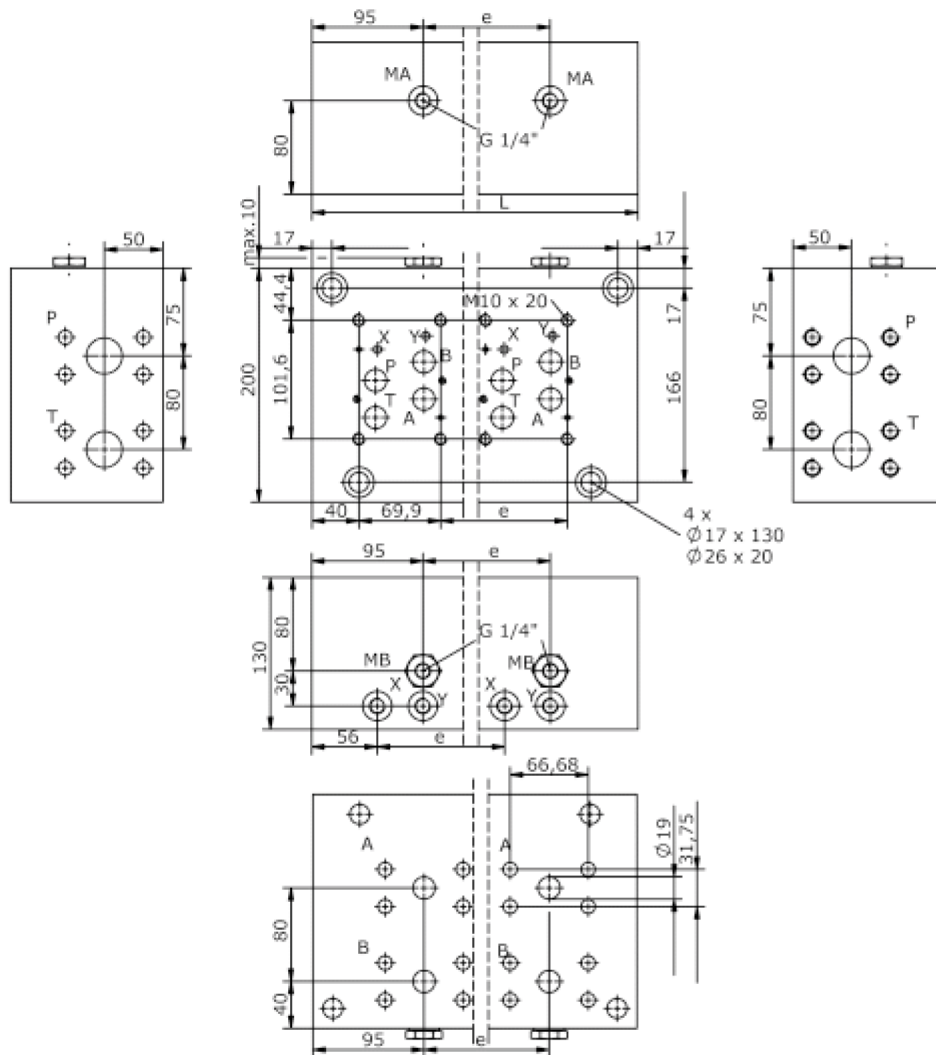
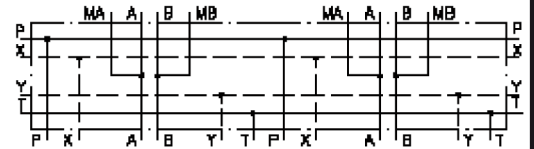


# single mounting plate, CETOP 7 (with SAE-ports SAE 1 1/4")

MSP-16A--S-U-SAE 1 1/4"-XY



# single mounting plate, CETOP 7 (with SAE-ports SAE 1 1/4")

MSP-16A-.S-U-SAE 1 1/4"-XY



Motrac Hydraulik GmbH  
Siemensring 87 - D-47877 Willich  
fon +49-(0)2154-8162.0 - fax +49-(0)2154-8162.499  
e-mail info.miw@motracindustries.com  
internet www.motracindustries.com

IM-260-140-00

(subject to change)

## Ordering example:

MSP - 16A - 3 - S - U - SAE1 1/4" - XY



## Model code:

- |   |   |
|---|---|
| <b>A</b> design<br>multi station mounting subplate                  | <b>E</b> port A and B at the bottom<br>port A and B at the bottom |
| <b>B</b> size and material<br>16A = aluminum (F37)                  | <b>F</b> port A and B<br>SAE 1 1/4" 6000 PSI                      |
| <b>C</b> qty. of directional valves<br>number of directional valves | <b>G</b> X and Y port<br>port X and Y                             |
| <b>D</b> port P and T at the side<br>port P and T at the side       |   |

## Technical Data:

nominal pressure: 250 bar

weight: