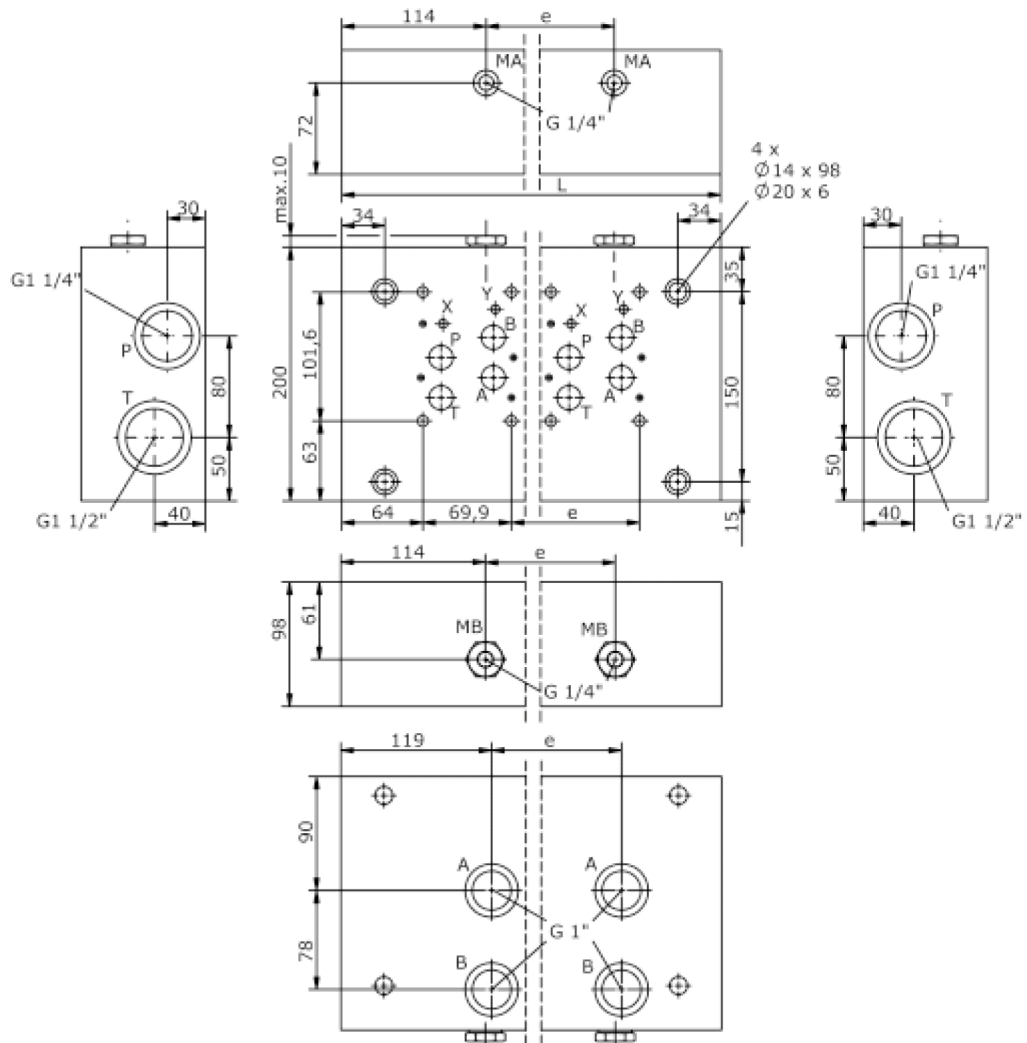
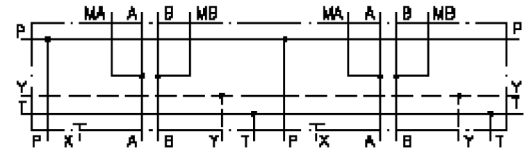


# single mounting plate, CETOP 7 (with internal pilot port)

MSP-16.-.-S-U

IM-260-109-00

(subject to change)



# single mounting plate, CETOP 7 (with internal pilot port)

MSP-16.-.-S-U



Motrac Hydraulik GmbH  
Siemensring 87 - D-47877 Willich  
fon +49-(0)2154-8162.0 - fax +49-(0)2154-8162.499  
e-mail info.miw@motracindustries.com  
internet www.motracindustries.com

IM-260-109-00

(subject to change)



## Ordering example:

MSP - 16A - 3 - S - U  
|        |        |        |        |  
**A**    **B**    **C**    **D**    **E**

## Model code:

- |   |  |
|---|--|
| <b>A</b> <b>design</b><br>multi station mounting subplate   | <b>C</b> <b>qty. of directional valves</b><br>number of directional valves |
| <b>B</b> <b>size and material</b><br>16A = aluminum (F37)<br>16S = steel (9SMnPb28K resp. GGG-40) | <b>D</b> <b>port P and T at the side</b><br>port P and T at the side       |
|   | <b>E</b> <b>port A and B at the bottom</b><br>port A and B at the bottom   |

## Technical Data:

**nominal pressure:** 250 bar (A)  
350 bar (S)

**weight:**