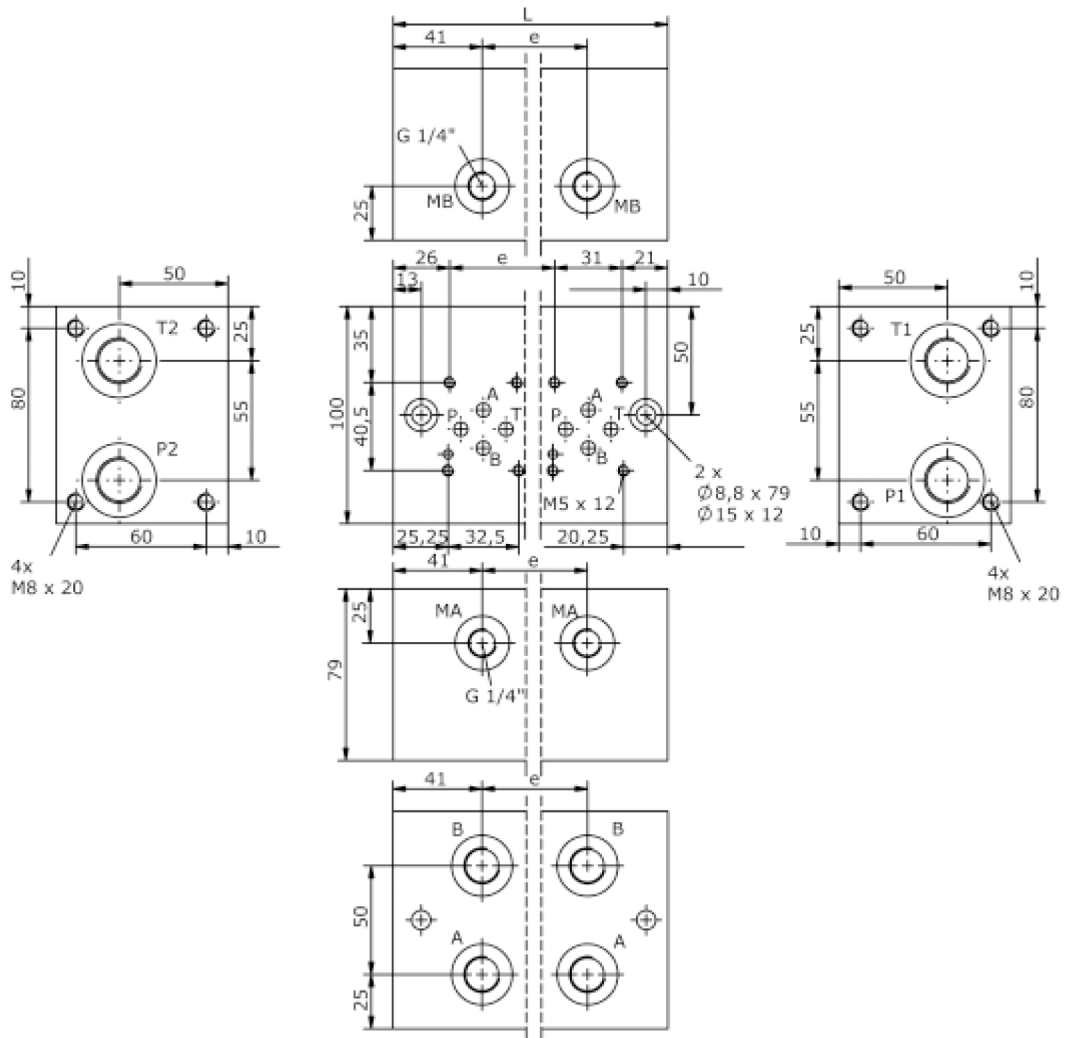
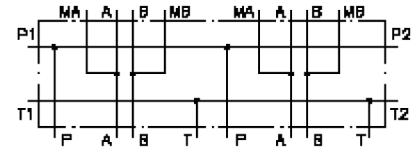


single mounting plate, CETOP 3 (with cylinder and gauge port)

MSP-06.-S01-.-S-U-B04-B03

IM-210-110-00

(subject to change)



single mounting plate, CETOP 3 (with cylinder and gauge port)

MSP-06.-S01-.-S-U-B04-B03



Motrac Hydraulik GmbH
Siemensring 87 - D-47877 Willich
fon +49-(0)2154-8162.0 - fax +49-(0)2154-8162.499
e-mail info.miw@motracindustries.com
internet www.motracindustries.com

IM-210-110-00

(subject to change)

Ordering example:

MSP - 06A - S01 - 2 - S - U - B04 - B03

A **B** **C** **D** **E** **F** **G** **H**

Model code:

- | | |
|---|--|
| A design
multi station mounting subplate | F port A and B at the bottom
port A and B at the bottom |
| B size and material
06A = aluminum (F37)
06S = steel (9SMnPb28K resp. GGG-40) | G port size P and T
B04 = BSPP 1/2"
B03 = BSPP 3/8"
B06 = BSPP 3/4" |
| C special variant
special variant | H port size A and B
B04 = BSPP 1/2"
B06 = BSPP 3/4" |
| D qty. of directional valves
number of directional valves | |
| E port P and T at the side
port P and T at the side | |

Technical Data:

nominal pressure: 250 bar (A)
350 bar (S)

weight: