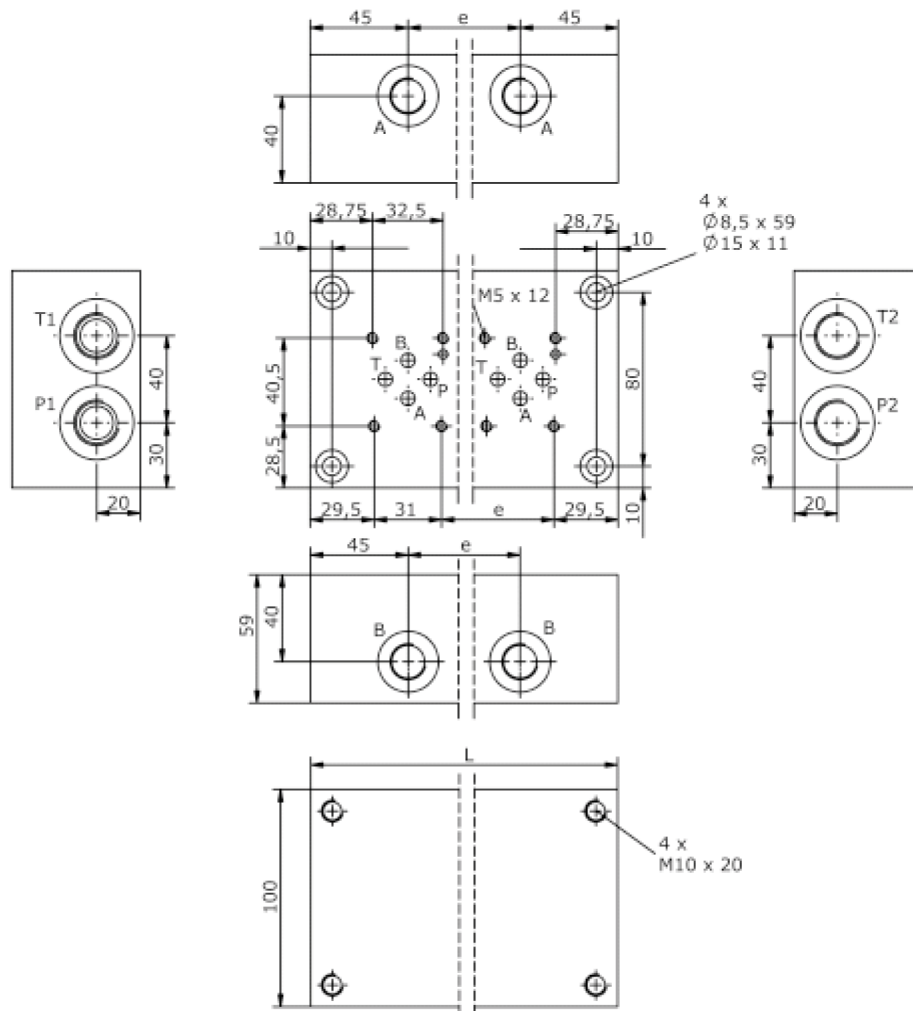
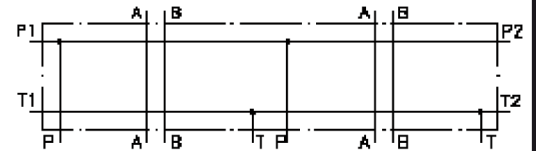


single mounting plate, CETOP 3 (ports at side)

MSP-06.-.-S-S-B..-B..



single mounting plate, CETOP 3 (ports at side)

MSP-06.-.-S-S-B..-B..



Motrac Hydraulik GmbH
Siemensring 87 - D-47877 Willich
fon +49-(0)2154-8162.0 - fax +49-(0)2154-8162.499
e-mail info.miw@motracindustries.com
internet www.motracindustries.com

IM-200-110-00

(subject to change)



Ordering example:

MSP - 06A - 6 - S - S - B04 - B03

↓ ↓ ↓ ↓ ↓ ↓

A **B** **C** **D** **E** **F** **G**

Model code:

- | | |
|--|--|
| <p>A design
multi station mounting subplate</p> <p>B size and material
06A = aluminum (F37)
06S = steel (9SMnPb28K resp. GGG-40)</p> <p>C qty. of directional valves
number of directional valves</p> <p>D port P and T at the front
port P and T at the frontside</p> | <p>E port A and B at the side
port A and B at the side</p> <p>F port size P and T
B03 = BSPP 1/2"
B04 = BSPP 1/2"</p> <p>G port size A and B
B02 = BSPP 1/4"
B03 = BSPP 3/8"</p> |
|--|--|

Technical Data:

nominal pressure: 250 bar (A)
350 bar (S)

weight: