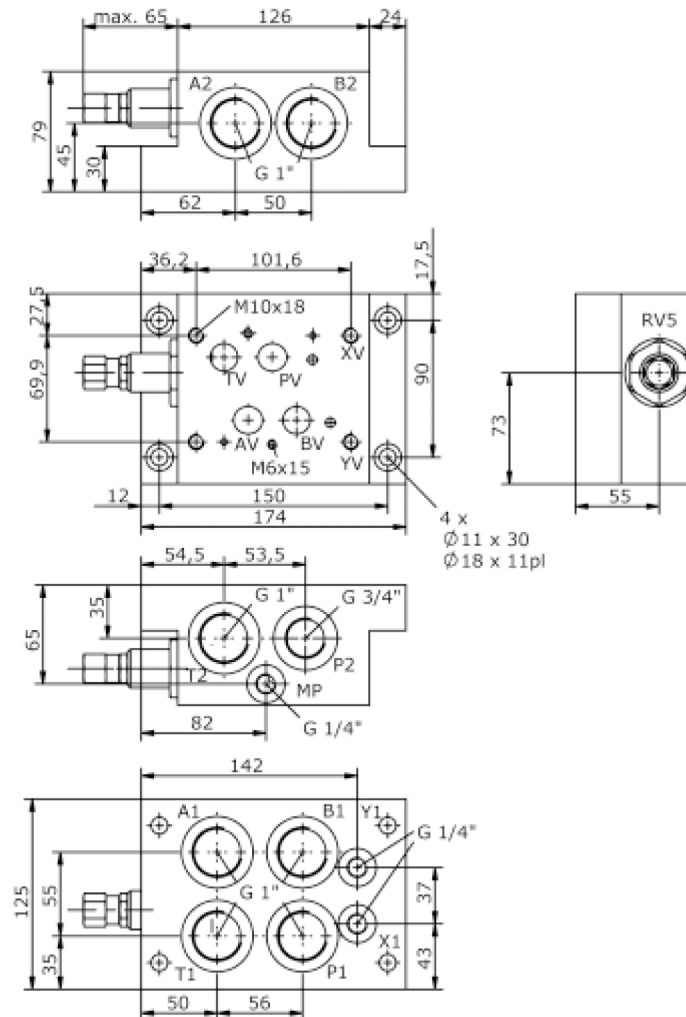
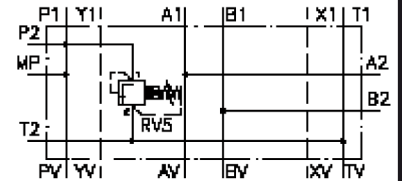


single mounting plate, CETOP 7 (with relief valve, ports bottom and side)

MEP-16.-DBV-05./..

IM-180-101-00

(subject to change)



single mounting plate, CETOP 7 (with relief valve, ports bottom and side)

MEP-16.-DBV-05./..



Motrac Hydraulik GmbH
Siemensring 87 - D-47877 Willich
fon +49-(0)2154-8162.0 - fax +49-(0)2154-8162.499
e-mail info.miw@motracindustries.com
internet www.motracindustries.com

IM-180-101-00

(subject to change)

Ordering example:

MEP - 16A - DBV - 05 - C / 30
| | | | | |
A **B** **C** **D** **E** **F**

Model code:

- | | |
|---|--|
| A design
single mounting plate | E adjustment
C = cap
K = handknob |
| B size and material
16A = aluminum (F37)
16S = steel (9SMnPb28K resp. GGG-40) | F pressure range
RV5-16.-..
30 = 34.0 - 210 bar
60 = 70.0 - 415 bar |
| C relief valve
relief-valve | |
| D relief valve
05 = RV5-16.-.. (pilot operated) see data
sheet no.: MP-170-161-00 | |

Technical Data:

- nominal pressure:** 250 bar (A)
415 bar (S)
- weight:** 4.9 / 13.5 kg (A/S)