

single mounting plate, CETOP 3 (with relief valve type PS.)

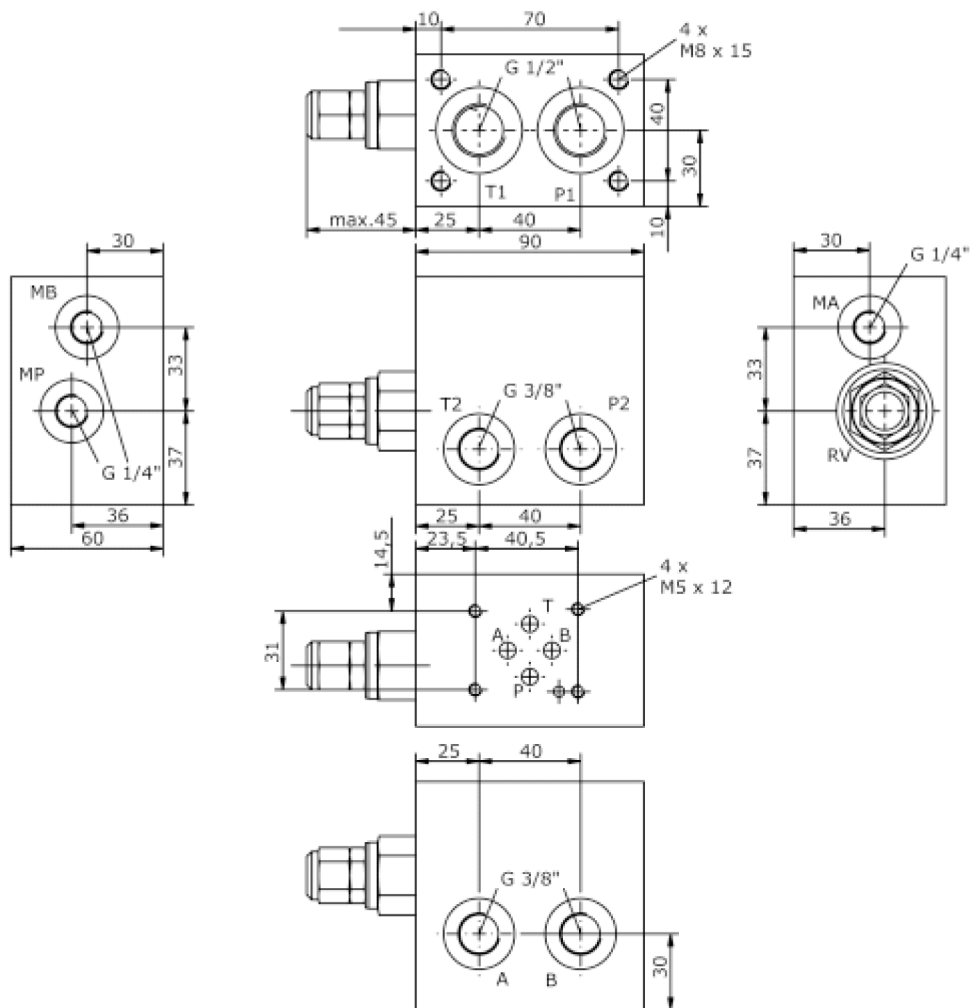
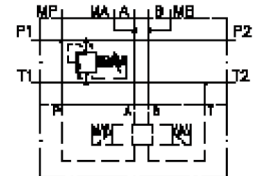
MEP-06.-DBV-PS./..



Motrac Hydraulik GmbH
Siemensring 87 - D-47877 Willich
fon +49-(0)2154-8162.0 - fax +49-(0)2154-8162.499
e-mail info.miw@motracindustries.com
internet www.motracindustries.com

IM-120-102-00

(subject to change)



single mounting plate, CETOP 3 (with relief valve type PS.)

MEP-06.-DBV-PS./..



Motrac Hydraulik GmbH
Siemensring 87 - D-47877 Willich
fon +49-(0)2154-8162.0 - fax +49-(0)2154-8162.499
e-mail info.miw@motracindustries.com
internet www.motracindustries.com

IM-120-102-00

(subject to change)



Ordering example:

MEP - 06A - DBV - PS - C / 30

A	B	C	D	E	F

Model code:

- | | |
|---|--|
| <p>A design
single mounting plate</p> <p>B size and material
06A = aluminum (F37)
06S = steel (9SMnPb28K resp. GGG-40)</p> <p>C relief valve
relief-valve</p> <p>D relief valve
PS = RVPS-10.-.. (pilot operated) see data sheet no.: CP-110-101-00</p> <p>E adjustment
C = cap
K = handknob</p> | <p>F pressure range
RVPS-10.-..</p> <p>15 = 3.4 - 105 bar
30 = 3.4 - 210 bar
50 = 3.4 - 350 bar</p> |
|---|--|

Technical Data:

nominal pressure: 250 bar (A)
350 bar (S)

weight: 1.3 / 3.5 kg (A/S)