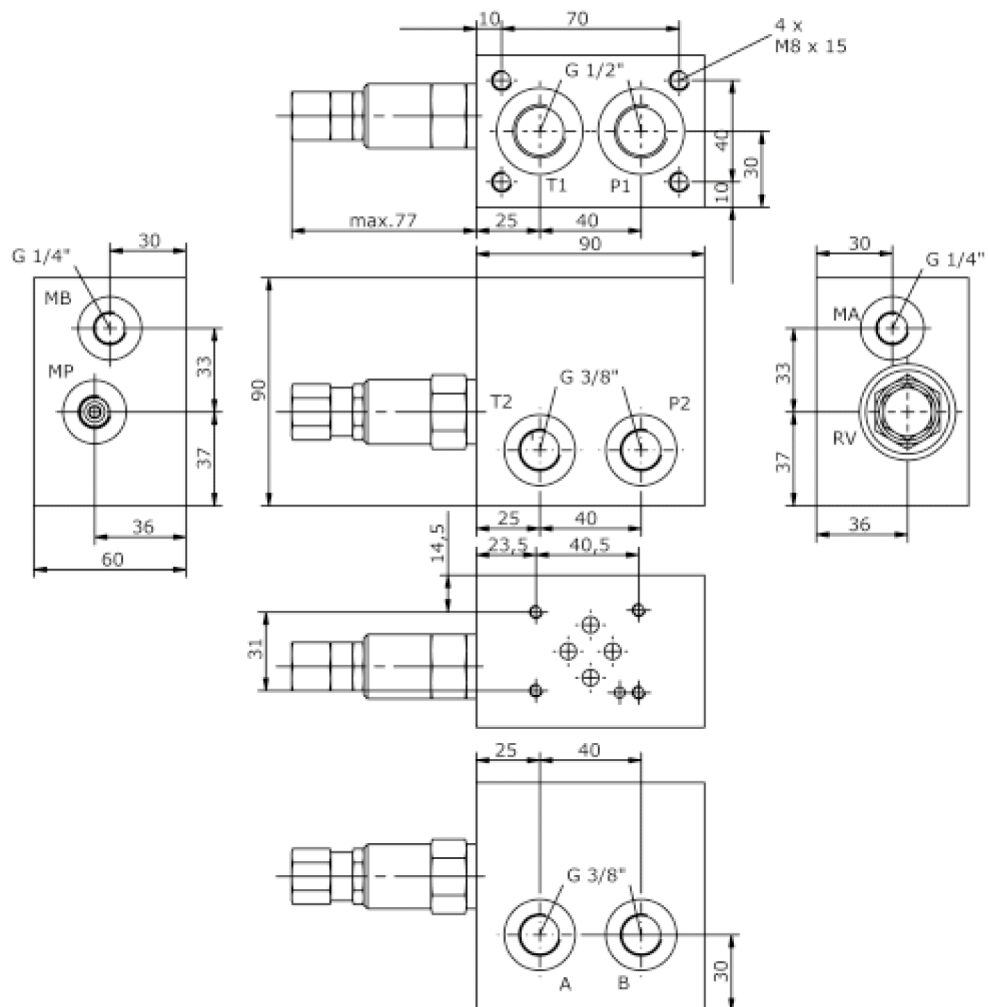
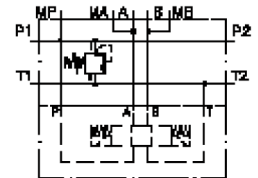


single mounting plate, CETOP 3 (with relief valve type RV.)

MEP-06.-DBV-.../..

IM-120-101-00

(subject to change)



single mounting plate, CETOP 3 (with relief valve type RV.)

MEP-06.-DBV-.../..

IM-120-101-00

(subject to change)

Ordering example:

MEP - 06A - DBV - 05 - C / 20

A	B	C	D	E	F

Model code:

- | | |
|--|---|
| <p>A design
single mounting plate</p> <p>B size and material
06A = aluminum (F37)
06S = steel (9SMnPb28K resp. GGG-40)</p> <p>C relief valve
relief-valve</p> <p>D relief valve
01 = RV1-10-... (direct acting) see data sheet no.: <u>MP-100-100-00</u>
05 = RV5-10-... (direct acting) see data sheet no.: <u>MP-170-101-00</u>
06 = RV6-10-... (direct acting) see data sheet no.: <u>MP-110-101-00</u>
10 = RV10-10-... (direct acting) see data sheet no.: <u>MP-110-103-00</u></p> <p>E adjustment
J = internal (only RV1 + RV5)
C = cap
K = handknob</p> | <p>F pressure range
RV1-10-...
03 = 3.5 - 20 bar
09 = 7.0 - 62 bar
18 = 17.0 - 124 bar
30 = 34.0 - 210 bar
36 = 34.0 - 250 bar
RV5-10-...
03 = 3.5 - 20 bar
20 = 7.5 - 140 bar
35 = 17.0 - 240 bar
50 = 50.0 - 350 bar
RV6-10-...
25 = 3.4 - 175 bar
50 = 140.0 - 350 bar
RV10-10-...
02 = 1.7 - 17 bar
05 = 3.5 - 35 bar
10 = 17.0 - 70 bar</p> |
|--|---|

Technical Data:

nominal pressure: 250 bar (A)
350 bar (S)

weight: 1.3 / 3.5 kg (A/S)