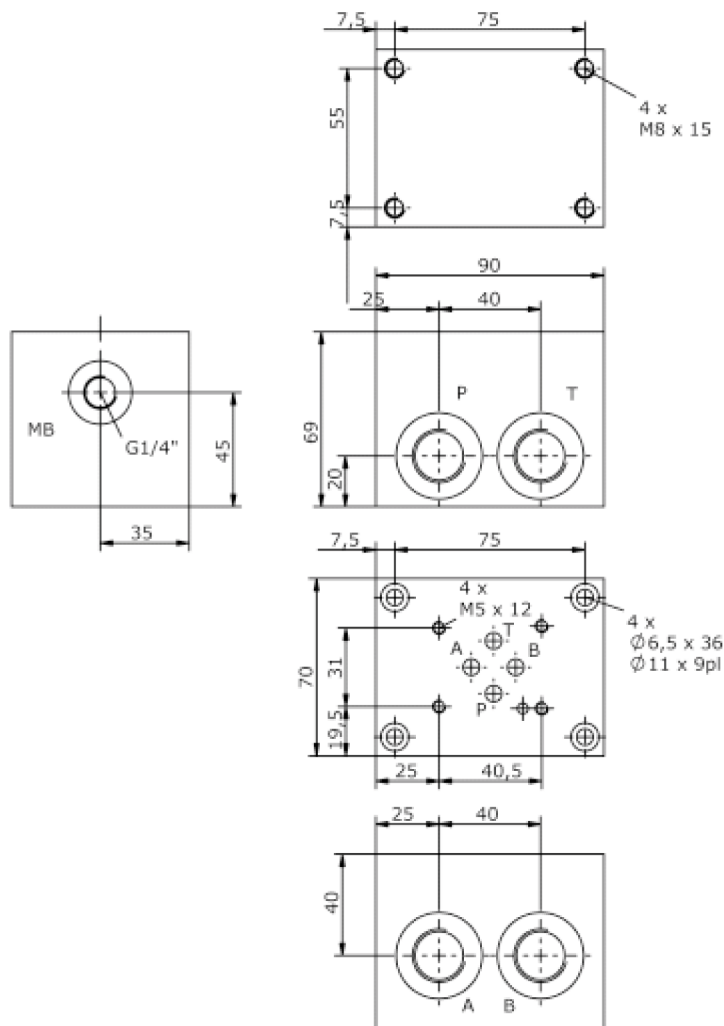
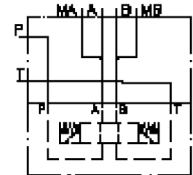


single mounting plate, CETOP 3 (ports at side)

MEP-06.-B..-B..

IM-100-110-00

(subject to change)



single mounting plate, CETOP 3 (ports at side)

MEP-06.-B..-B..



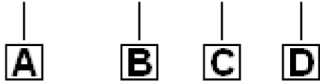
Motrac Hydraulik GmbH
Siemensring 87 - D-47877 Willich
fon +49-(0)2154-8162.0 - fax +49-(0)2154-8162.499
e-mail info.miw@motracindustries.com
internet www.motracindustries.com

IM-100-110-00

(subject to change)

Ordering example:

MEP - 06A - B04 - B04



Model code:

- | | |
|--|---|
| A design
single mounting plate | D port size A and B
B02 = BSPP 1/4"
B03 = BSPP 3/8"
B04 = BSPP 1/2" |
| B size and material
06A = aluminum (F37)
06S = steel (9SMnPb28K resp. GGG-40) | |
| C port size P and T
B02 = BSPP 1/4"
B04 = BSPP 1/2" | |

Technical Data:

- nominal pressure:** 250 bar (A)
350 bar (S)
- weight:** 1.3 / 3.5 kg (A/S)