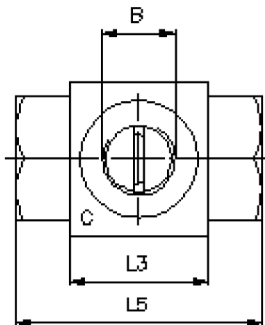
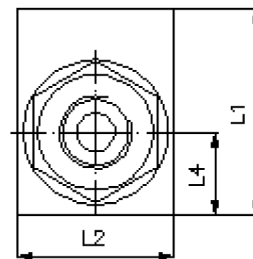
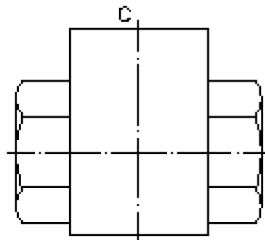
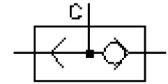


shuttle valve (housing (BSPP ...“))

DSV1-...-B-B..

IG-150-000-00

(subject to change)



size	part size	L1	L2	L3	L4	L5	B	weight
08	B02	40	30	30	15	52	G 1/4"	0.4
10	B03	50	44	40	22	70	G 3/8"	0.8
12	B04	60	45	40	24	71	G 1/2"	0.9

shuttle valve (housing (BSPP ...“))

DSV1-...-B-B..



Motrac Hydraulik GmbH
Siemensring 87 - D-47877 Willich
fon +49-(0)2154-8162.0 - fax +49-(0)2154-8162.499
e-mail info.miw@motracindustries.com
internet www.motracindustries.com

IG-150-000-00

(subject to change)



Ordering example:

DSV1 - 08 N - B - B02
| | | | |
A **B** **C** **D** **E**

Model code:

A **design**
shuttle valve

B **size**
08
10
12

C **sealing**
N = Buna (NBR)
V = Viton (FPM)

D **function mode**
B = ball type

E **adapter size**
B02 = BSPP 1/4"
B03 = BSPP 3/8"
B04 = BSPP 1/2"

Technical Data:

note: dimensions and weight see tabel on first page

nominal pressure: 350 bar

weight:

temperature range: -40°C to 120°C

fluids: hydraulic oil as per DIN 51524 T1 (ISO TC 131)

seals: optional Buna (NBR) or Viton (FPM), as well as Teflon wascher (PTFE)