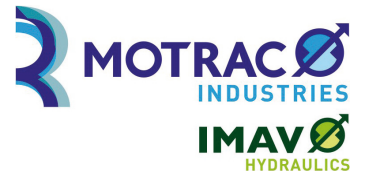


**counterbalance valve, screw-in type
((adjustable) vented)**
CBPG-08.-.-0-..

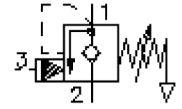


Motrac Hydraulik GmbH
Siemensring 87 - D-47877 Willich
fon +49-(0)2154-8162.0 - fax +49-(0)2154-8162.499
e-mail info.miw@motracindustries.com
internet www.motracindustries.com

BUCHER
hydraulics

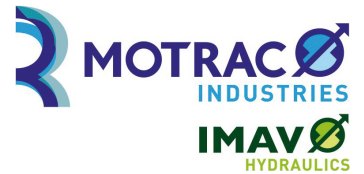
CC-420-081-00

(subject to change)



counterbalance valve, screw-in type ((adjustable) vented)

CBPG-08.-.-0-..



Motrac Hydraulik GmbH
Siemensring 87 - D-47877 Willich
fon +49-(0)2154-8162.0 - fax +49-(0)2154-8162.499
e-mail info.miw@motracindustries.com
internet www.motracindustries.com

CC-420-081-00

(subject to change)

BUCHER
hydraulics

Ordering example:

CBPG - 08N - C - 0
| | | |
A **B** **C** **D**

Model code:

- | | |
|---|--|
| A design
counter balance valve | D construction
0 = screw-in valve |
| B size and sealing
08N = Buna (NBR)
08V = Viton (FPM) | |
| C adjustment
S = screw adjustment
C = cap
K = handknob | |

Technical Data:

nominal pressure:	350 bar
nominal flow:	38 l/min
weight:	
temperature range:	-40°C to 120°C
fluids:	hydraulic oil as per DIN 51524 T1 (ISO TC 131)
max. leakage:	5 drops/min at 22 cSt (50°C) and approx. 20% below the setted crack pressure
seals:	optional Buna (NBR) or Viton (FPM), as well as Teflon wascher (PTFE)
crack pressure:	0.4 - 0.6 bar (check valve)
cavity:	C-08-3S see datasheet no. IK-200-089-00
housing:	3SLH-08.-B.. see datasheet no. IH-200-000-00
seal kit:	SP-CDS-08N-33S (NBR), SP-CDS-08V-33S (FPM)