

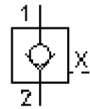
# check valve, screw-in type (external pilot operated)

POCX-12.-0-2B-...

CC-240-121-00

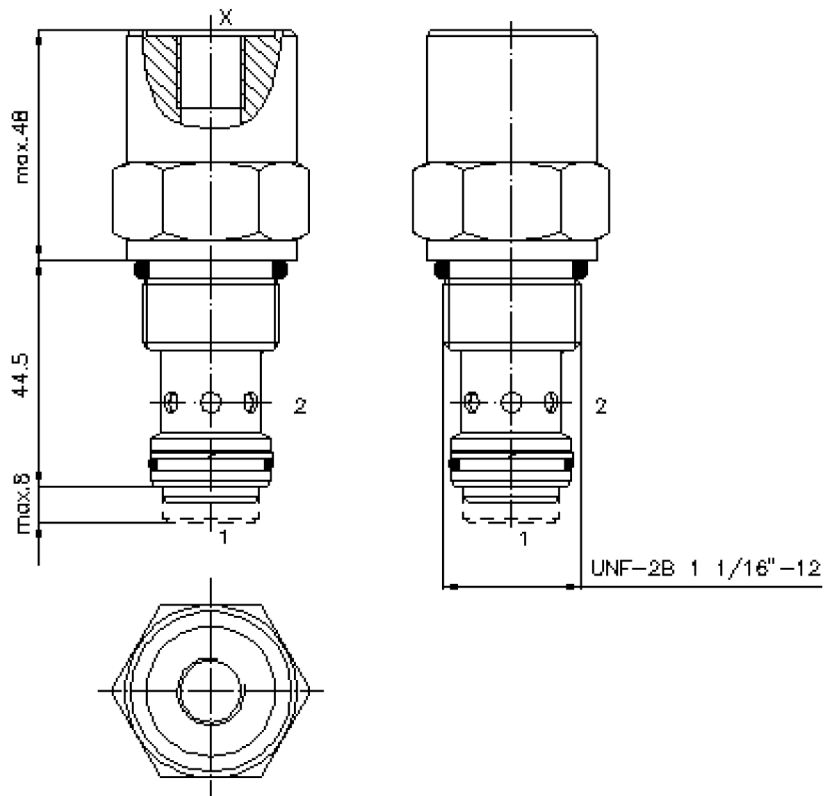
(subject to change)

**BUCHER**  
hydraulics

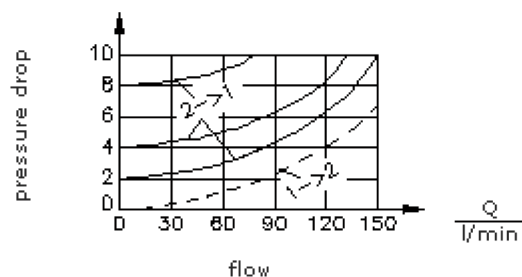


HEX 1 5/16"  
(torque  
cartridge:  
95 - 100 Nm)

cavity:  
C-12-2  
see  
data-sheet no.:  
[IK-100-129-00](#)



$\frac{\Delta p}{\text{bar}}$   $\Delta p$ -Q-characteristic  
at 28 cSt (50°C)



# check valve, screw-in type (external pilot operated)

POCX-12.-0-2B-...



Motrac Hydraulik GmbH  
Siemensring 87 - D-47877 Willich  
fon +49-(0)2154-8162.0 - fax +49-(0)2154-8162.499  
e-mail info.miw@motracindustries.com  
internet www.motracindustries.com

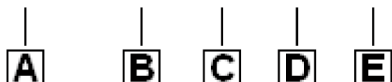
CC-240-121-00

(subject to change)

**BUCHER**  
hydraulics

## Ordering example:

POCX - 12N - 0 - 2B - 015



## Model code:

- |          |                                                                                   |          |                                                                                                                                                 |
|----------|-----------------------------------------------------------------------------------|----------|-------------------------------------------------------------------------------------------------------------------------------------------------|
| <b>A</b> | <b>design</b><br>check valve<br>pilot operated by hydraulics<br>pilot ratio 3 : 1 | <b>E</b> | <b>crack pressure</b><br>030 = 2.1 bar<br>060 = 4.1 bar<br>090 = 6.2 bar<br>120 = 8.3 bar<br>150 = 10.3 bar<br>180 = 12.4 bar<br>210 = 14.5 bar |
| <b>B</b> | <b>size and sealing</b><br>12N = Buna (NBR)<br>12V = Viton (FPM)                  |          |                                                                                                                                                 |
| <b>C</b> | <b>construction</b><br>0 = screw-in valve                                         |          |                                                                                                                                                 |
| <b>D</b> | <b>pilot port "X"</b><br>2B = BSPP 1/4"<br>4T = UNF 7/16"-20                      |          |                                                                                                                                                 |

## Technical Data:

- |                           |                                                                      |
|---------------------------|----------------------------------------------------------------------|
| <b>note:</b>              | orifice at port "X" designated                                       |
| <b>nominal pressure:</b>  | 350 bar                                                              |
| <b>nominal flow:</b>      | 132 l/min                                                            |
| <b>weight:</b>            | 0.22 kg                                                              |
| <b>temperature range:</b> | -40°C to 120°C                                                       |
| <b>fluids:</b>            | hydraulic oil as per DIN 51524 T1 (ISO TC 131)                       |
| <b>max. leakage:</b>      | 5 drops/min at 22 cSt (50°C) and 350 bar                             |
| <b>seals:</b>             | optional Buna (NBR) or Viton (FPM), as well as Teflon wascher (PTFE) |
| <b>cavity:</b>            | C-12-2 see datasheet no. <a href="#">IK-100-129-00</a>               |
| <b>housing:</b>           | 2LH-12.-B.. see datasheet no. <a href="#">IH-100-000-00</a>          |
| <b>seal kit:</b>          | SP-CDS-12N-21 (NBR), SP-CDS-12V-21 (FPM)                             |