

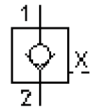
# check valve, screw-in type (extern pilot operated)

POCX-10.-0-2B-...

CC-240-101-00

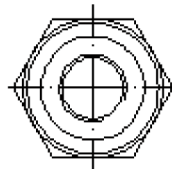
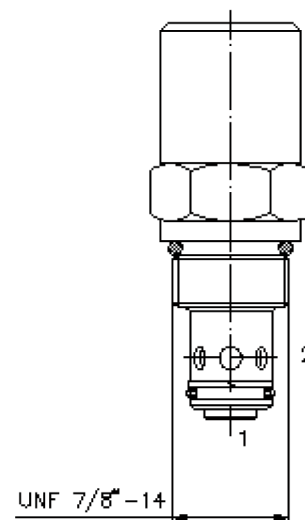
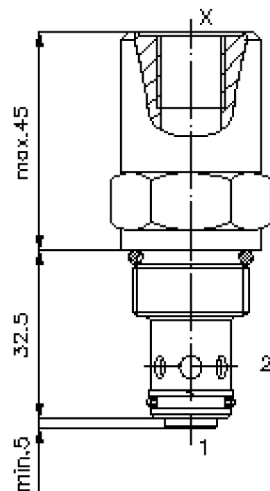
(subject to change)

**BUCHER**  
hydraulics

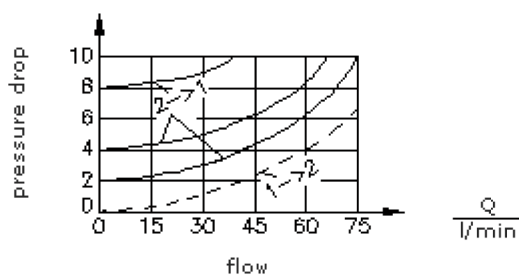


HEX 27mm  
(torque  
cartridge:  
48 - 54 Nm)

cavity:  
C-10-2  
see  
data-sheet no.:  
[IK-100-109-00](#)



$\frac{\Delta p}{\text{bar}}$   $\Delta p$ -Q-characteristic  
at 28 cSt (50°C)



# check valve, screw-in type (extern pilot operated)

POCX-10.-0-2B-...



Motrac Hydraulik GmbH  
Siemensring 87 - D-47877 Willich  
fon +49-(0)2154-8162.0 - fax +49-(0)2154-8162.499  
e-mail info.miw@motracindustries.com  
internet www.motracindustries.com

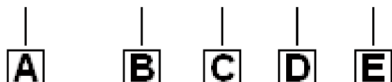
CC-240-101-00

(subject to change)

**BUCHER**  
hydraulics

## Ordering example:

POCX - 10N - 0 - 2B - 015



## Model code:

- |  |  |
|--|--|
| <b>A</b> <b>design</b><br>check valve<br>pilot operated by hydraulics<br>pilot ratio 3 : 1 | <b>E</b> <b>crack pressure</b><br>030 = 2.1 bar<br>060 = 4.1 bar<br>090 = 6.2 bar<br>120 = 8.3 bar<br>150 = 10.3 bar<br>180 = 12.4 bar<br>210 = 14.5 bar |
| <b>B</b> <b>size and sealing</b><br>10N = Buna (NBR)<br>10V = Viton (FPM)                  |  |
| <b>C</b> <b>construction</b><br>0 = screw-in valve   |  |
| <b>D</b> <b>pilot port "X"</b><br>2B = BSPP 1/4"<br>4T = UNF 7/16"-20                      |  |

## Technical Data:

<b>note:</b>	orifice at port "X" designated
<b>nominal pressure:</b>	350 bar
<b>nominal flow:</b>	70 l/min
<b>weight:</b>	0.14 kg
<b>temperature range:</b>	-40°C to 120°C
<b>fluids:</b>	hydraulic oil as per DIN 51524 T1 (ISO TC 131)
<b>max. leakage:</b>	5 drops/min at 22 cSt (50°C) and 350 bar
<b>seals:</b>	optional Buna (NBR) or Viton (FPM), as well as Teflon wascher (PTFE)
<b>cavity:</b>	C-10-2 see datasheet no. <a href="#">IK-100-109-00</a>
<b>housing:</b>	2LH-10.-B.. see datasheet no. <a href="#">IH-100-000-00</a>
<b>seal kit:</b>	SP-CDS-10N-21 (NBR), SP-CDS-10V-21 (FPM)